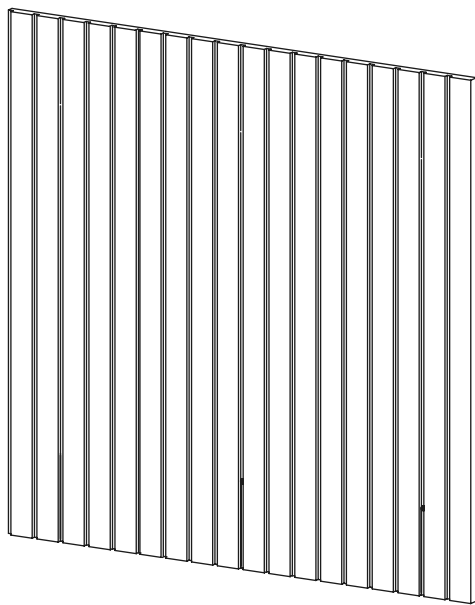


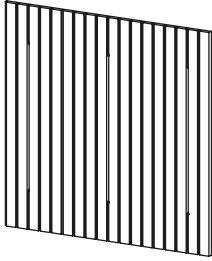
VicStrip Square

Installation Manual



✓ MATERIAL NEEDED

Included

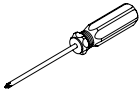


VicStrip

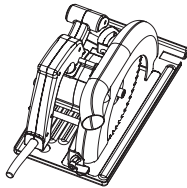


Screws

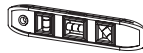
Not Included



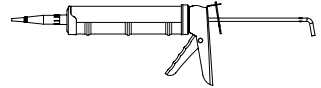
Screwdriver



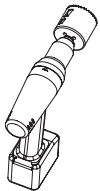
Circular saw



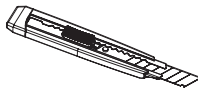
Level



Flexi Glue Ultra



Hole saw



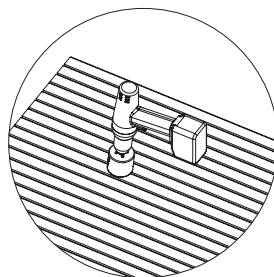
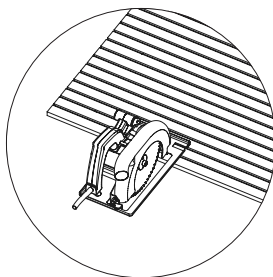
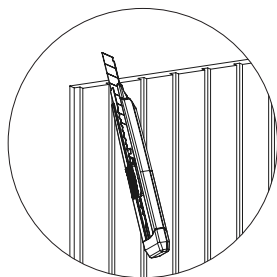
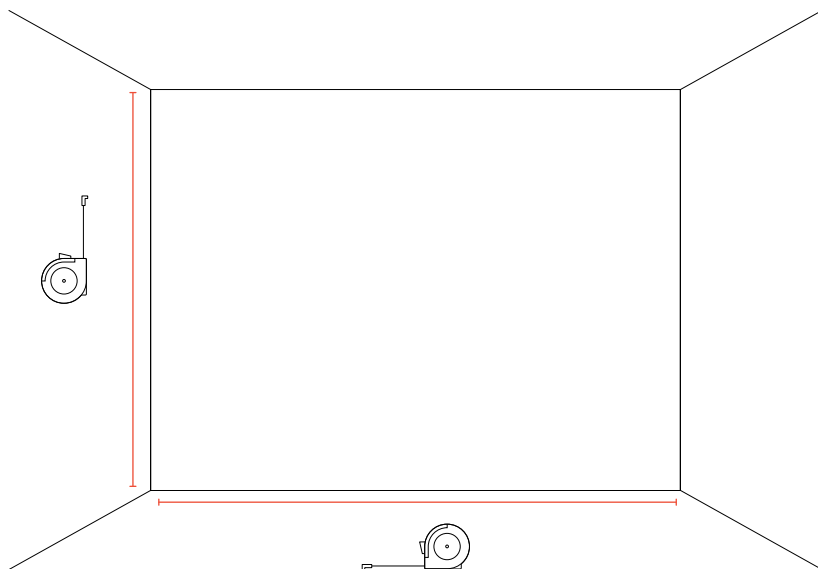
Box cutter



Measuring Tape

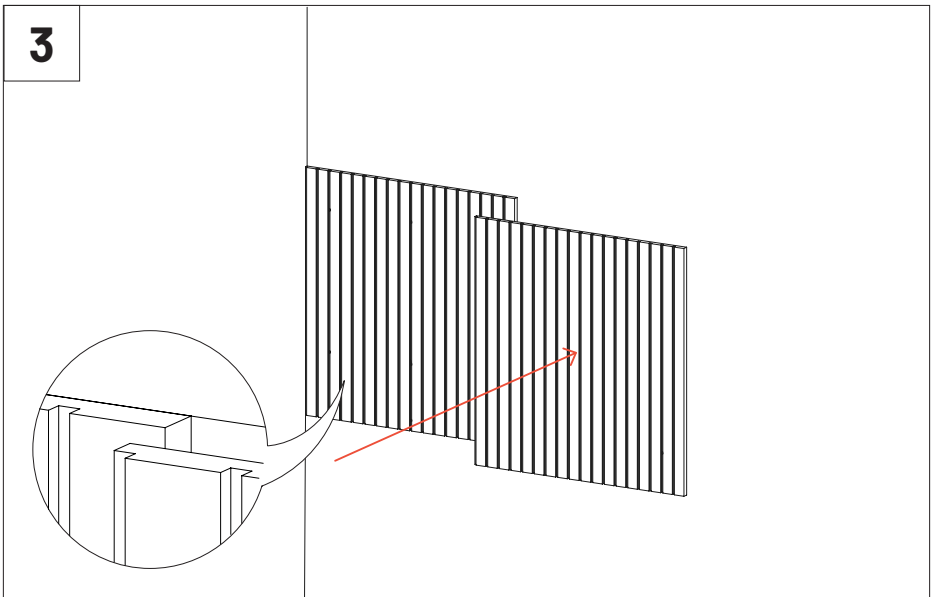
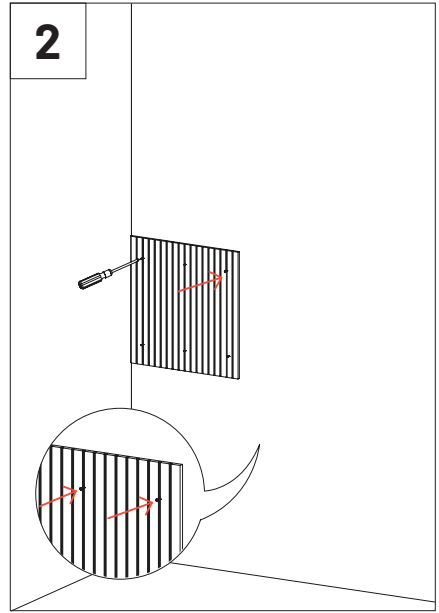
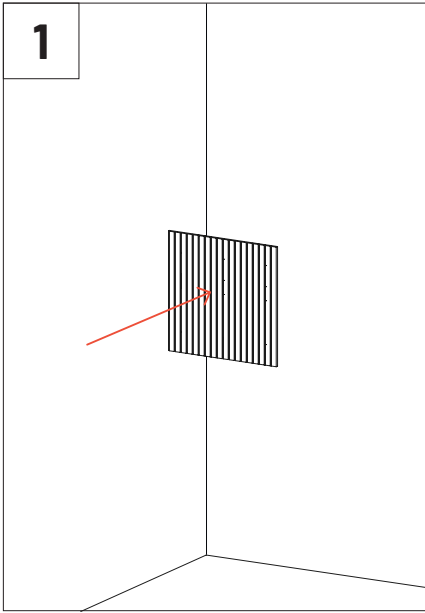
1

Before installing the panels, measure the wall where you are going to apply them. If necessary, make the necessary cuts to ensure a proper installation. The cuts can be done as indicated below.



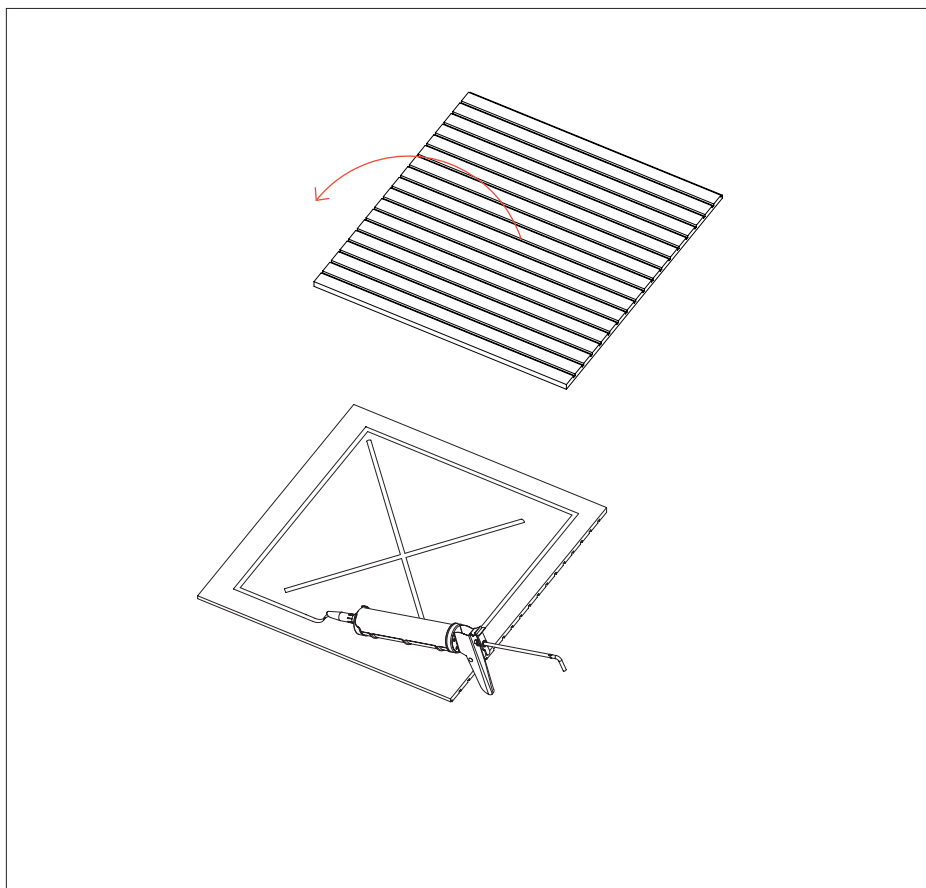
- Longitudinal cut following the PET groove, with the help of a box cutter.
- Longitudinal cut on the laminated area, with the help of a circular saw with \approx 60-Tooth blade.
- Transversal cut with the help of a circular saw with \approx 60-Tooth blade.
- Round hole with the help of a hole saw.

Wall installation with screws - For application to plasterboard walls or wooden structures, install the VicStrip with the screws provided, inserting them into the panel grooves and attaching them to the supporting wall or wooden structure.



Wall installation with glue - For application on masonry or concrete walls, it is recommended to apply glue (not included).

Apply the glue on the back of the acoustic panel, according to the diagram. Place the panel on the suitably chosen position on the wall. Once in the desired place, press it firmly against the wall.



To ensure that you maximise the strength of the glue, don't make any adjustments to the panel after bonding.

Wall and ceiling surfaces should be examined prior to installation, ensuring they are clean, smooth, and dry. If you have unpainted gypsum board surfaces, these should be primed with a drywall primer (or another material manufactured especially for the purpose), to equalize the absorption between the gypsum board face paper, joint compound, and skin coating materials. You should then apply the paint, and allow air circulation in order to dry the paint within the time frame specified by the paint manufacturer. Please ensure the paint is dry before installing the panel. Make sure the room has all the necessary conditions to receive the panels.

Main Office, R&D & Logistics

Avenida do Pólo 3, N.º 159, Carvalhosa
4590-137 Paços de Ferreira, Portugal

Office

Rua Quinta do Bom Retiro N.º 16, Armazém 9
2820-690 Charneca da Caparica, Portugal
T (+351) 212 964 100

Info and Sales

E sales@vicoustic.com

www.vicoustic.com



© Vicoustic, 2023 | V1

No parts of this document might be copied and/or published without written consent of Vicoustic.